



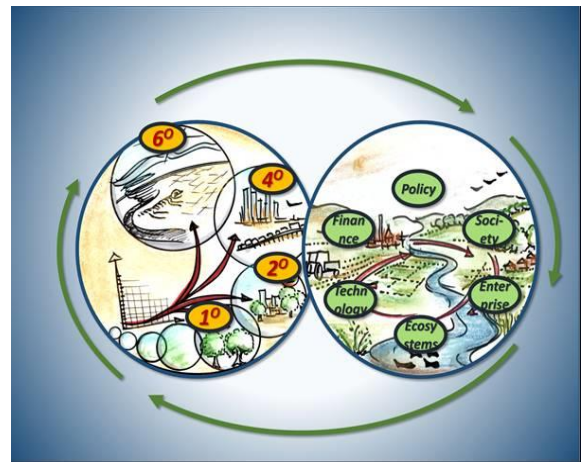
Eco-wise collaboratorium

A proposal for a workshop at the COP26, November 2021

VO.3 JR 05-03-21

The ECO- WISE COLLABORA- TORIUM

...is about the prospects ahead for zero-carbon cities, circular economies and inclusive societies. For such transformations we need to combine social, technical, economic, ecological, political and cultural layers, far beyond any single field or sector or department. This calls for some kind of 'collective climatic intelligence' which can connect these deeper layers, with a wider set of stakeholders, with further horizons. So we set up a 'Collaboratorium' or 'Laboratory for collective climatic intelligence', with a program of deliberation, learning, experimentation and innovation.



EVENT OUTLINE

This event opens the doors on the world's first Eco-wise Collaboratorium. We will demonstrate, debate and interact by visual thinking: this brings together a physical meeting at the COP, with the global online 'Eco-wise' community.



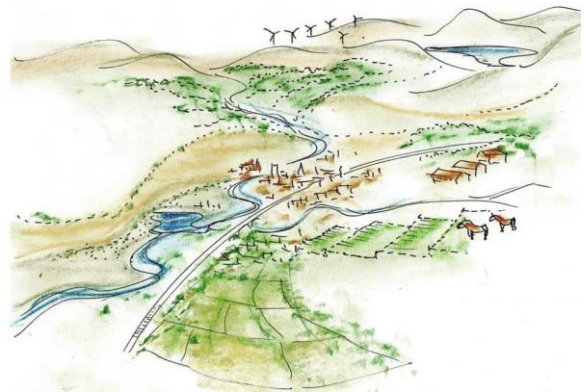
CLIMATE CHANGE RELEVANCE

Our Future Cities policy-research program shows that a low/zero carbon transition has to fit with many other transitions also in motion – social, technical, economic, political etc. So we need new ways to realize the synergies between them, with enhanced learning, thinking, innovation and co-production. This all adds up to an emerging ‘collective climatic intelligence’, which helps to connect programs such as low-carbon finance and technology, planning and ecosystems, education and health, adaptation and industry and so on. This crucial ‘3.0’ dimension then provides crucial insights for many related themes, such as ‘green new deal 3.0’, ‘bio-regional 3.0’, ‘eco-finance 3.0’ and so on.



RESEARCH-INTO-ACTION

At the centre of the Eco-wise Collaboratorium is the UKRI-funded flagship project ‘Peri-cene’ (peri-urbanization climate-environment: www.peri-cene.net). This studies the global spread of cities into a new kind of urban-environment system, the peri-urban hinterland and extended footprint of human settlements. Communities of all kinds sprawl into the peri-urban, often in the line of climate-related flood, fire, drought, storm, sea-level rise and many other hazards. The Peri-cene project aims to provide the first ever comprehensive assessment of global peri-urbanisation, with its climate impacts, risks and vulnerabilities. It then provides an interactive process of developing ‘adaptive pathways’, and the economic and governance systems to support them. In this way the results are a live demonstration of the *Eco-wise* ‘3.0’ principles and the *Collaboratorium* which can take them forward.



INTENDED AUDIENCE

The Eco-wise Collaboratorium has so far worked mainly with forward-thinking academics, civil society organizations and public authorities, in the fields of climate policy, urban-regional planning, economic development, governance innovation and smart technologies. We are now keen to widen this net, open the door and interact with other groups: children / youth, elderly, ethnic minorities and so on.



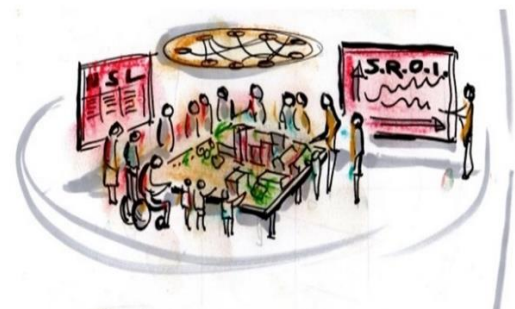
PARTNER-SHIPS

Global South-North perspectives and partnerships are well represented: firstly within the Peri-cene project, with a consortium including KTH Stockholm, Indian Institute of Technology Madras, and a Policy Lab of 21 cities, ICLEI and UN-Habitat. (Cities include Melbourne, Tokyo, Guangzhou, Changsha, Surabaya, Bangkok, Dhaka, Chennai, Cairo, Doha, Johannesburg, Kumasi, Helsinki, Manchester, Naples, Granada, Belo Horizonte, Santiago, Toronto, Mexicali, San Diego). External partnerships are also active in other parts of the program, including EC Joint Research Centre Seville, the Joint Program Initiative Urban Europe, and the Higher School of Economics Moscow.



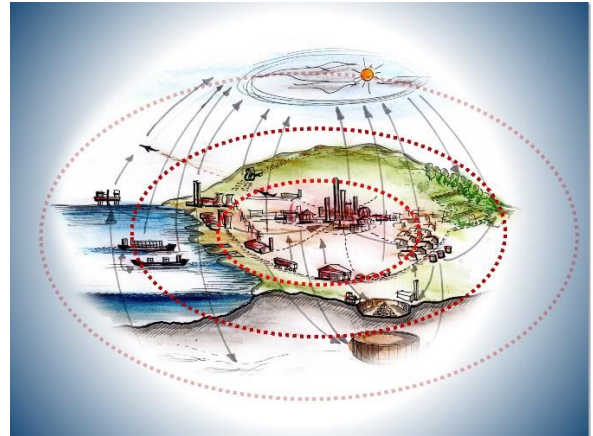
DIVERSITY & INCLUSION

We use interactive visual thinking as a means to look beyond the normal boundaries of policy and research. This can speak especially to groups such as children / youth, elderly, ethnic minorities, faith / cultural communities etc, and we aim to prioritize such groups at the physical event.



LOCAL / GLOBAL LINKS

The partnerships above are highly global, but this perspective is based on local realities. The Peri-cene project provides a host of local / regional case studies and examples, from around the world. These are not only so-called 'best practices', but 'learning practices' with many lessons to be explored, again with a focus on visual thinking and interactive materials.



METHODS & TECHNIQUES

The techniques developed for this Collaboratorium follow a '1-2-3' combination: this includes (a) multi-thread discussion platform, (b) structured online whiteboards, and (c) virtual reality meeting spaces. We estimate 50-60 participants are likely at the physical event, plus an online community of 50-60 in real time. We prioritise visual thinking, as above, and would aim to use any available screens for temporary displays at the workshop.



CONCLUSION

To live together on a small planet depends on new ways of organizing cities and economies and societies. This calls for a new kind of 'operating system', one based on collaboration and co-production. We need 'smart' technical intelligence – but also a 'wiser' kind of intelligence, which brings together different ways of thinking – social, technical, ecological, political and cultural. This event opens the door on a unique experiment in progress, the world's first Eco-wise Collaboratorium. More than a one-off session, it is an essential part of a growing program for the coming transformations.



For information see -

[**Future-Proof Cities - Manchester Urban Institute**](#)

[**Synergistic Conversations**](#)